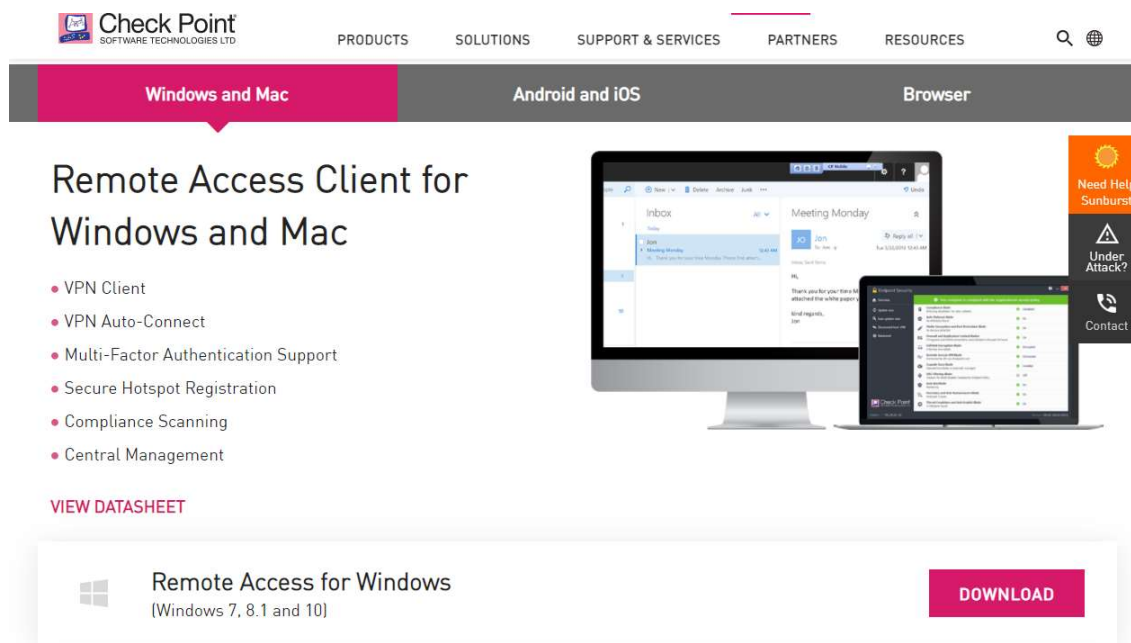


Configuração VPN Check Point em Windows 8.x e Windows 10

Uma versão on-line atualizada desta documentação está disponível em:
<http://www.pr.gov.br/vpn/>

Instalação do Client

1. Antes de iniciar as configurações, instale o software cliente necessário, disponível em:
<https://www.checkpoint.com/quantum/remote-access-vpn/#downloads>



The screenshot shows the Check Point website's product page for the Remote Access Client for Windows and Mac. The page features a navigation bar with 'PRODUCTS', 'SOLUTIONS', 'SUPPORT & SERVICES', 'PARTNERS', and 'RESOURCES'. Below the navigation, there are tabs for 'Windows and Mac', 'Android and iOS', and 'Browser'. The main content area is titled 'Remote Access Client for Windows and Mac' and lists several features: VPN Client, VPN Auto-Connect, Multi-Factor Authentication Support, Secure Hotspot Registration, Compliance Scanning, and Central Management. A 'VIEW DATASHEET' link is provided. At the bottom, there is a download button for 'Remote Access for Windows (Windows 7, 8.1 and 10)'.

2. Clicar em Download.

Será aberta uma nova página com os detalhes do Download. No momento da criação desse documento, a versão disponível era a E85.0.0. Clicar novamente em Download.

Download Details

E85.00 Check Point Remote Access VPN Clients for Windows

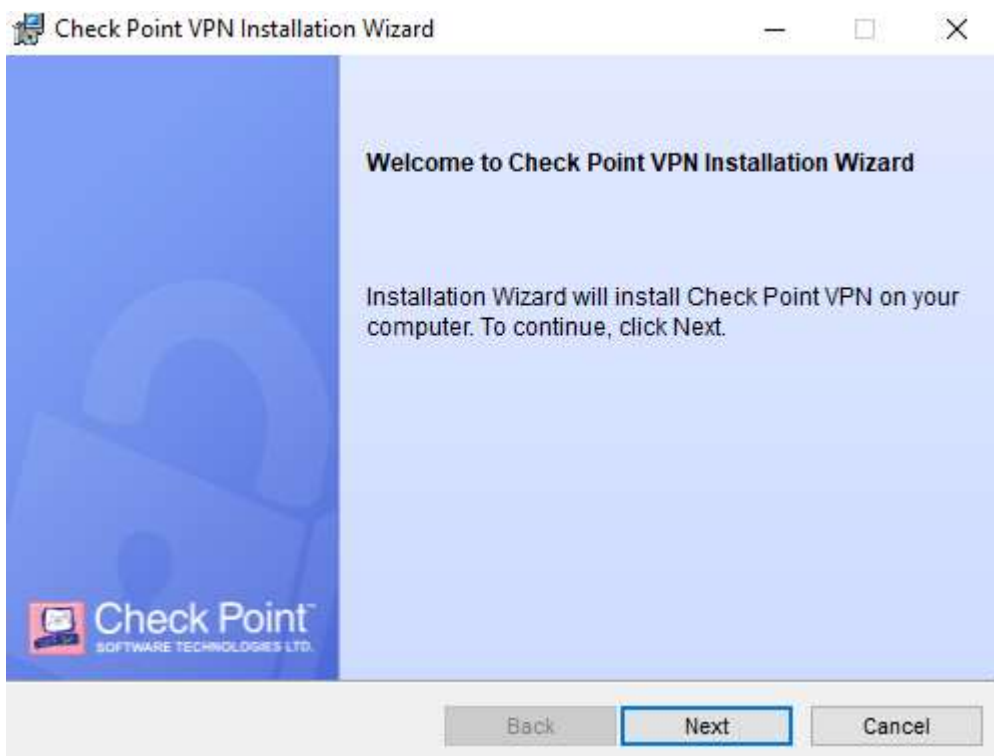
[Download](#)

Details

File Name	E85.00_CheckPointVPN.msi
Product	SecuRemote, Check Point Mobile, Endpoint Security VPN
Version	E85
OS	Windows
Build Number	
MD5	3899fa08f8bf00cb207ecd2bf93d201
SHA1	f87caa1d0a35e221c5ca1aac7779f078cf7c3008
SHA256	28f6c4fe02ac5295330b46ec8b413752e62a5b264b76c595da0eb85850a94db5
Size	24.46 MB
Date Published	2021-05-18

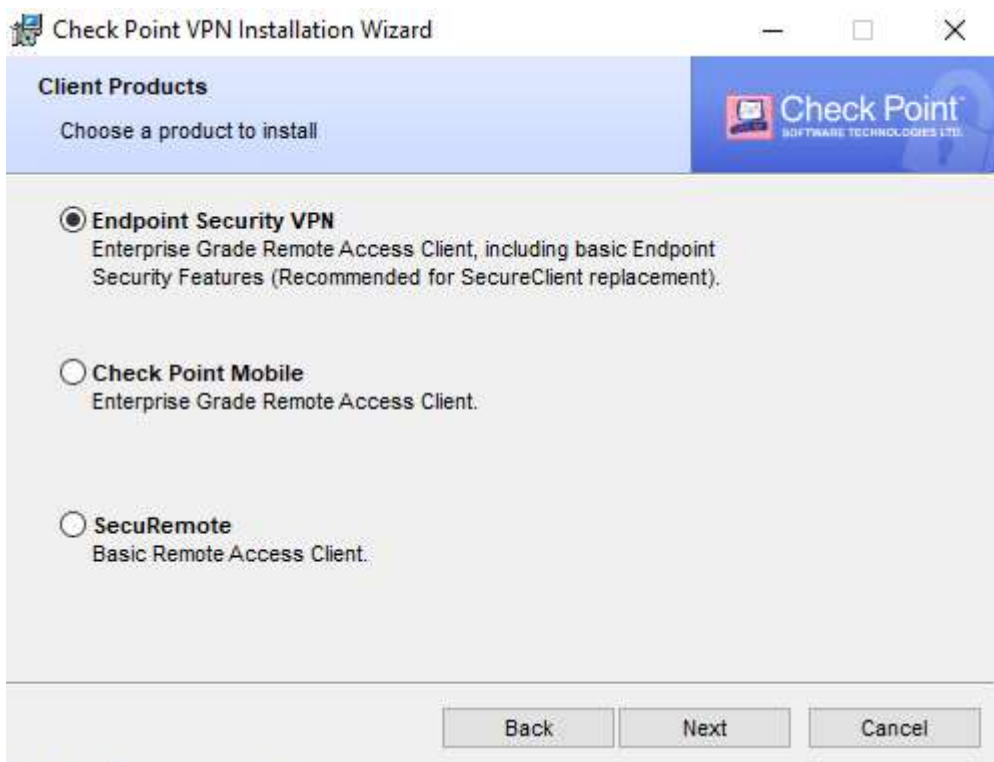
[Show less details](#) ^

3. Após a finalização do download, executar o arquivo [.msi](#) salvo na máquina.



Clicar em **Next**

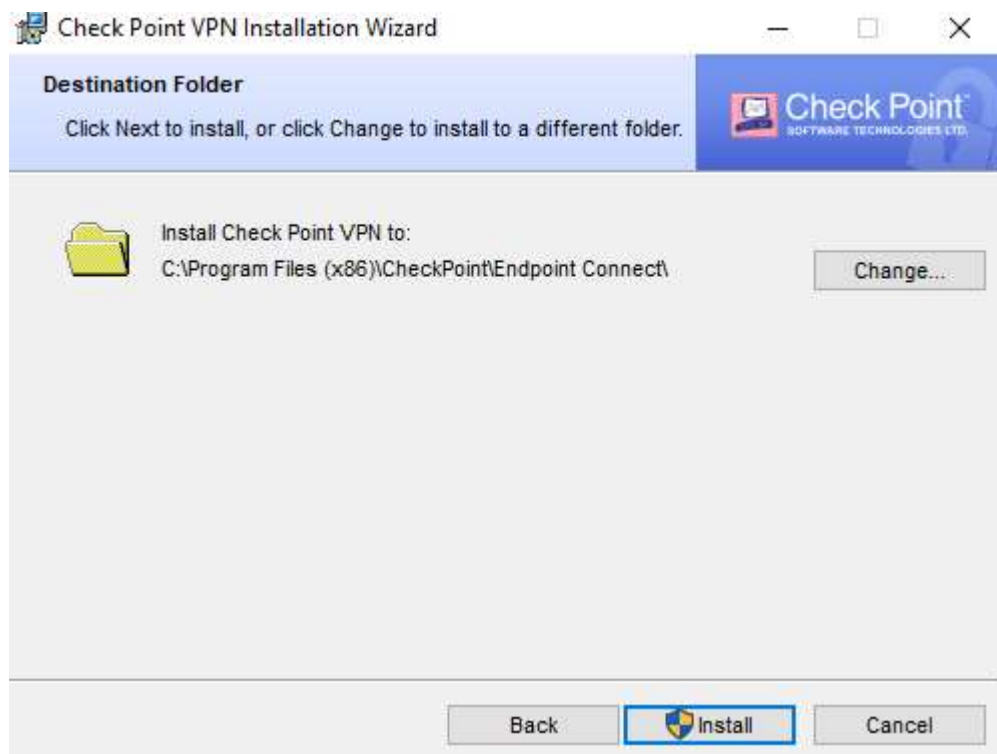
4. Selecionar Endpoint Security VPN e **Next**.



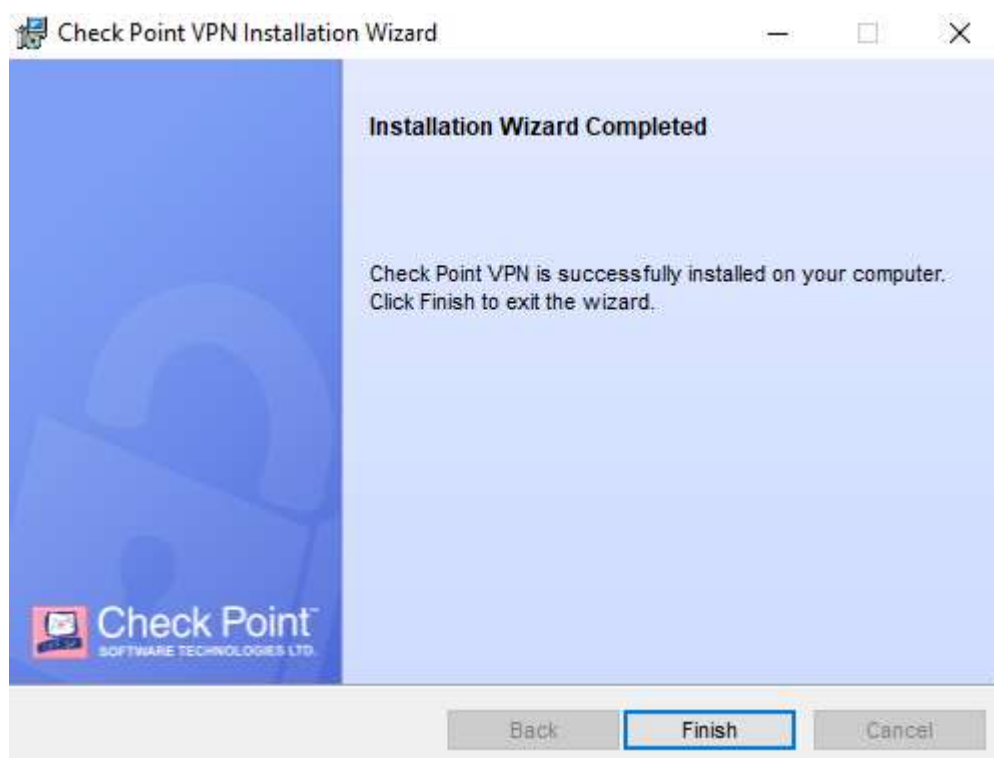
5. Aceitar os termos da licença




6. Será informado o diretório onde será feita a instalação. Caso seja necessário alterar o destino, clique em **Change**. Para continuar a instalação, clicar em **Install**.



7. Para finalizar a instalação, clicar em **Finish**.



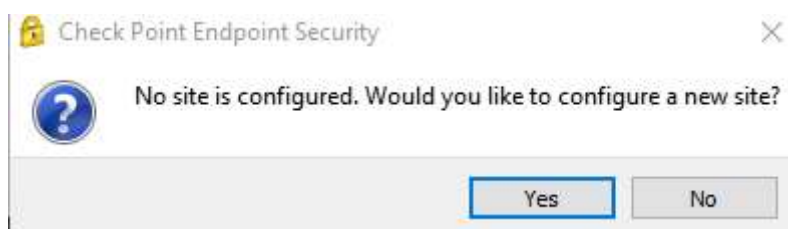
Configuração do Client

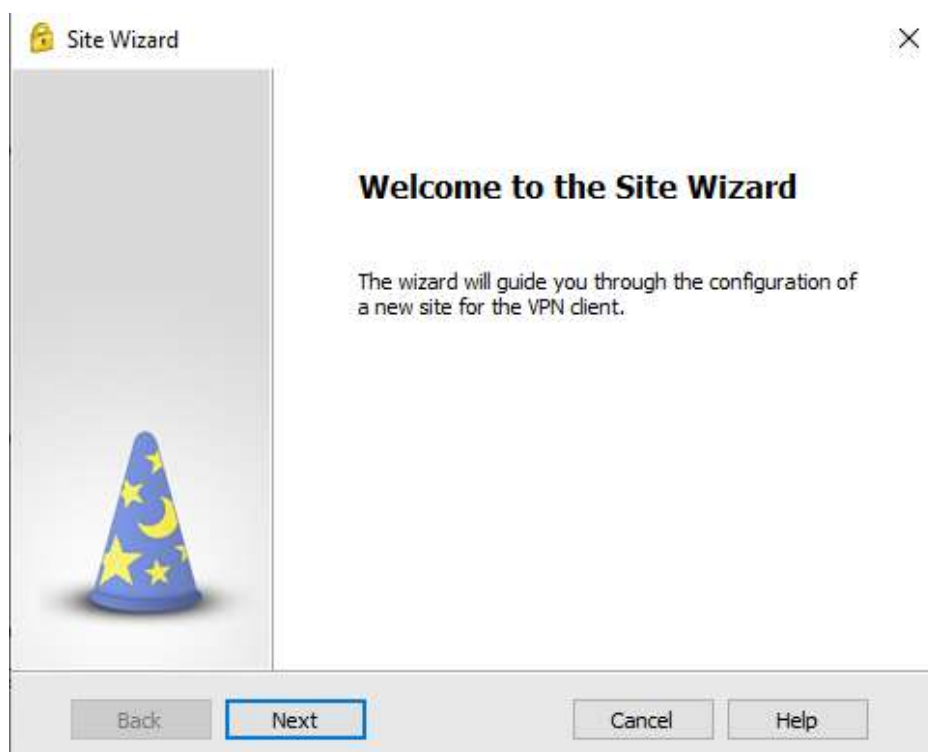
1. Para efetuar a configuração da VPN, clicar 2 vezes no símbolo de um cadeado na barra de tarefas do Windows. Esse ícone ficará disponível direto após a instalação. Se ele não estiver visível clicar em  para mostrar os ícones.



Será apresentada uma tela parecida com a mostrada abaixo. Clicar em **Yes** para iniciar o processo de configuração.

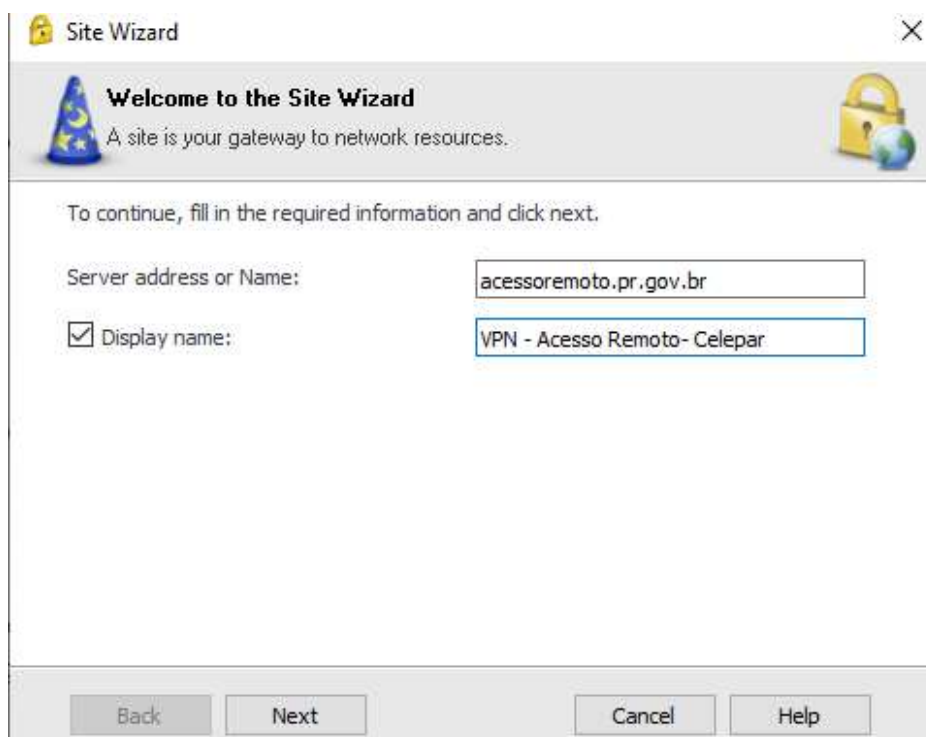
:



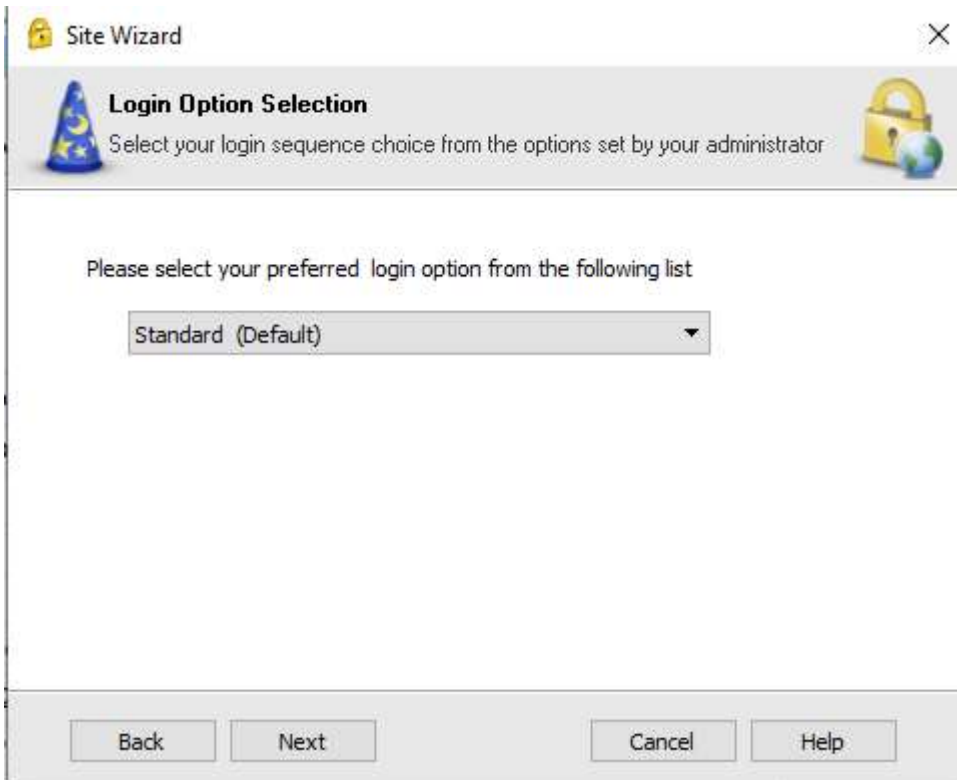


Clicar em Next

2. Preencher o campo Server address or Name com **acessoremoto.pr.gov.br**. Se desejável, pode-se alterar o campo Display Name para um nome da sua escolha ou manter o padrão. Clicar em Next.

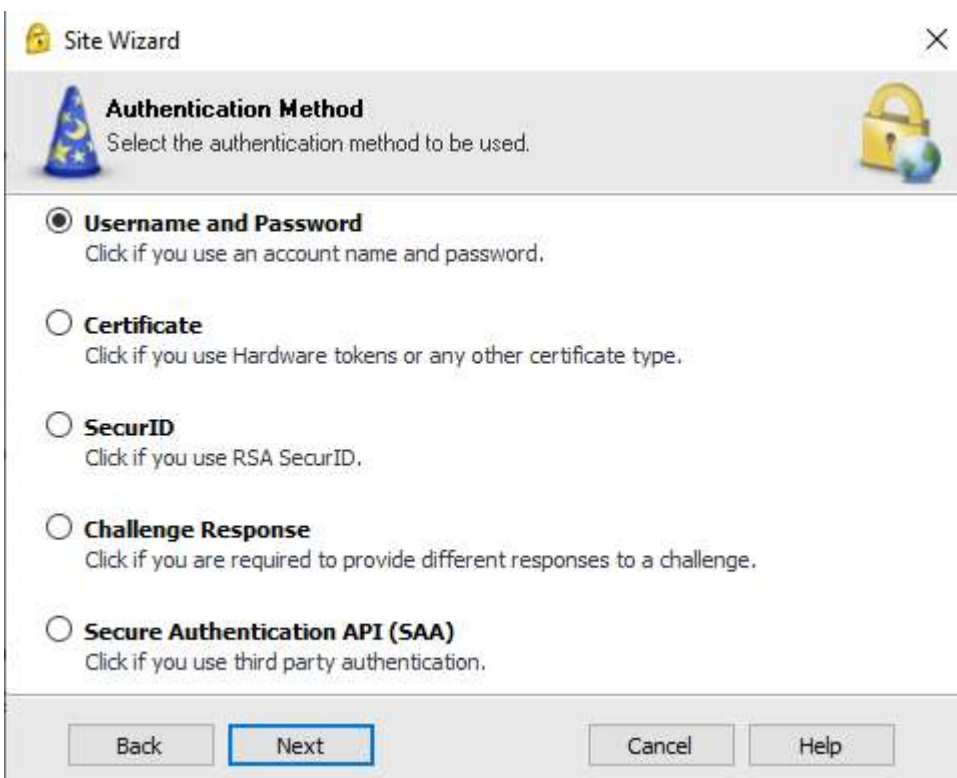


3. Manter como **Standard** (Default).



The dialog box is titled "Site Wizard" and "Login Option Selection". It contains a wizard icon and a lock icon. The text reads: "Select your login sequence choice from the options set by your administrator". Below this, it says "Please select your preferred login option from the following list". A dropdown menu is shown with "Standard (Default)" selected. At the bottom, there are buttons for "Back", "Next", "Cancel", and "Help".

4. Selecionar (manter) como **Username e Password**.

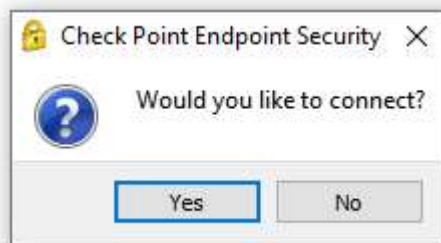


The dialog box is titled "Site Wizard" and "Authentication Method". It contains a wizard icon and a lock icon. The text reads: "Select the authentication method to be used.". Below this, there are five radio button options:

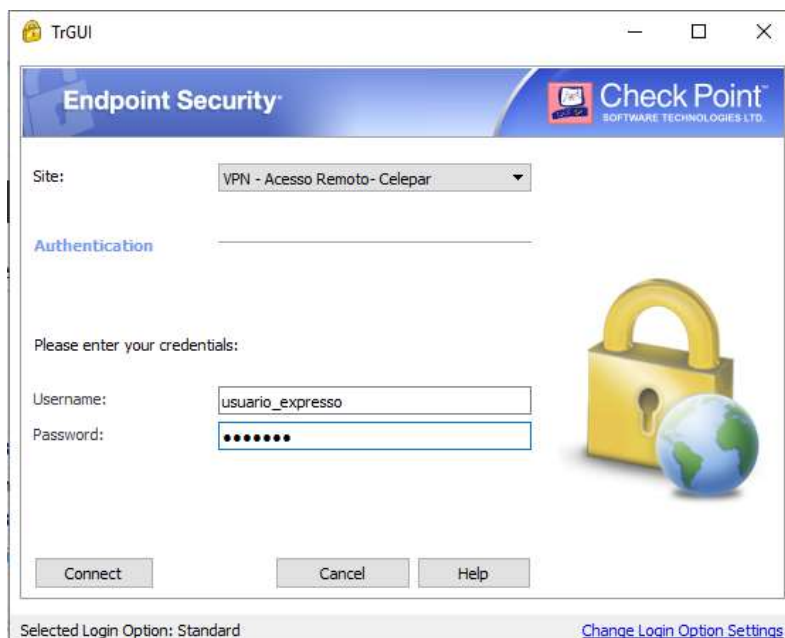
- Username and Password**
Click if you use an account name and password.
- Certificate**
Click if you use Hardware tokens or any other certificate type.
- SecurID**
Click if you use RSA SecurID.
- Challenge Response**
Click if you are required to provide different responses to a challenge.
- Secure Authentication API (SAA)**
Click if you use third party authentication.

At the bottom, there are buttons for "Back", "Next", "Cancel", and "Help". The "Next" button is highlighted with a blue border.

5. Clicar em **Finish**.



6. Para efetuar a conexão, informar o usuário e a senha do Expresso e clicar em **Connect**.



Check Point Endpoint Security

Endpoint Security

No security policy is configured.

VPN ✔ **Connected**

Active site is `acessoremoto.pr.gov.br`

VPN

Site: `acessoremoto.pr.gov.br`

IP Address: XXXXXXXXXX Disconnect

Duration: 04:30:38

Expiration: 01:29:18

Options

Manage your VPN options. VPN Options

Advanced

	Packets	KBs
Encrypted	182540	13577
Decrypted	460780	433715

Help

Check Point Endpoint Security - Options

Endpoint Security

Sites **Advanced**

A site represents the organization you want to connect to.

Name	Buttons
VPN - Acesso Remoto- Celepar	New Properties Delete

Save & Close Help

Decrypted 20 6

Properties of VPN - Acesso Remoto- Celepar

Details Settings Authentication

Name: VPN - Acesso Remoto- Celepar

IP Address: XXXXXXXXXX

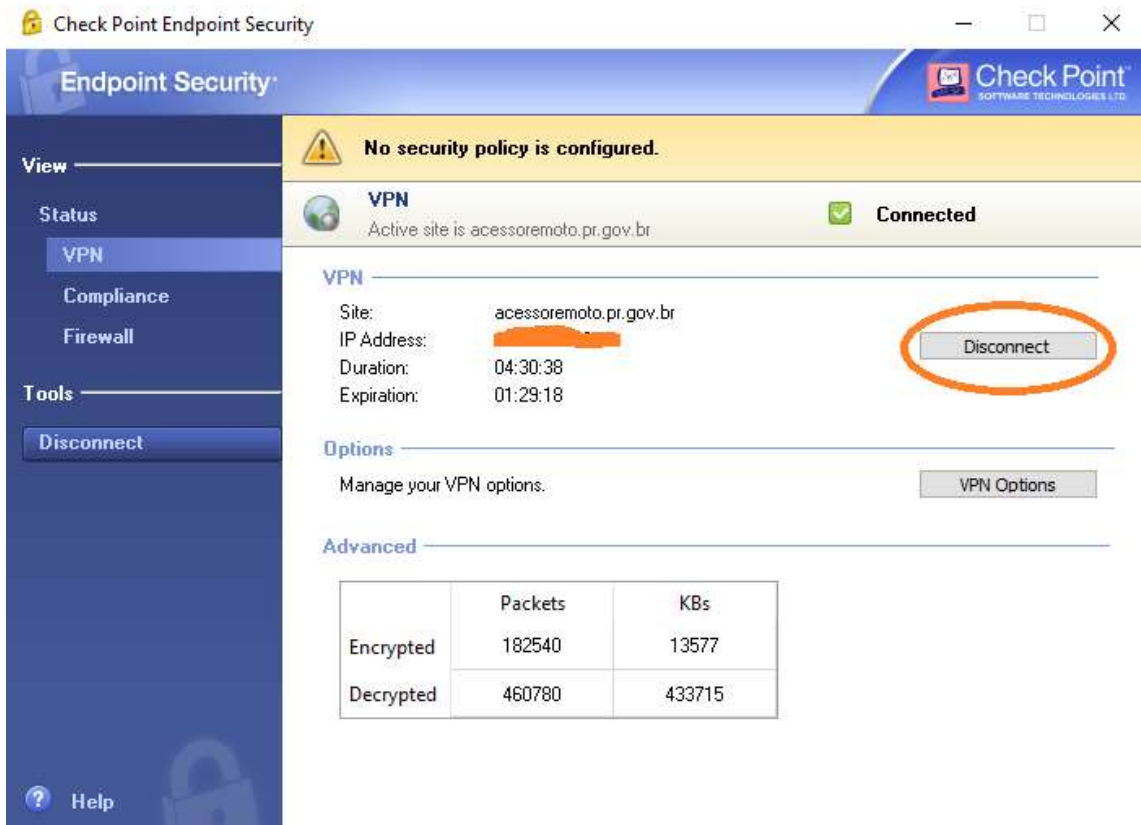
Last time connected: Wed Jul 14 07:47:18 2021

Last office mode IP address: 10. 1.0

Last time updated: Wed Jul 14 07:47:18 2021

OK Cancel Help

7. Para encerrar a conexão, clicar em **Disconnect**.



The screenshot shows the Check Point Endpoint Security interface. At the top, there is a warning banner: "No security policy is configured." Below this, the VPN status is shown as "Connected" with a green checkmark. The active site is "acessoremoto.pr.gov.br". The VPN details section shows: Site: acessoremoto.pr.gov.br, IP Address: [redacted], Duration: 04:30:38, and Expiration: 01:29:18. A "Disconnect" button is circled in orange. Below the VPN details, there is an "Options" section with a "VPN Options" button. At the bottom, there is an "Advanced" section with a table showing statistics.

	Packets	KBs
Encrypted	182540	13577
Decrypted	460780	433715